

LEXMARK C760, 762, 750, 752 CARTRIDGE REMANUFACTURING INSTRUCTIONS



**LEXMARK
C760N, 762N
COLOR LASER PRINTER**



FRONT VIEW OF CARTRIDGE



SIDE VIEW WASTE HOPPER



REAR VIEW OF CARTRIDGE





SEPARATING THE CARTRIDGE SECTIONS

1. Using a hook tool, release the toner hopper from the drum unit by disengaging the tension spring on one side of the cartridge as shown.



2. Disengage the spring on the other side.



3. With a small amount of pressure, pull the toner hopper and drum unit apart from the waste hopper starting point.



4. Then continue from the chip side.



USA
Ph: +1 310-280-9620
Fx: +1 310-838-7294

EUROPE
+34-93-757-1335
+34-93-741-4166

JAPAN
+81-3-44-55-2789
+1 310-838-7294

BRAZIL
+55-11-4822-3033
+55-11-4822-3353

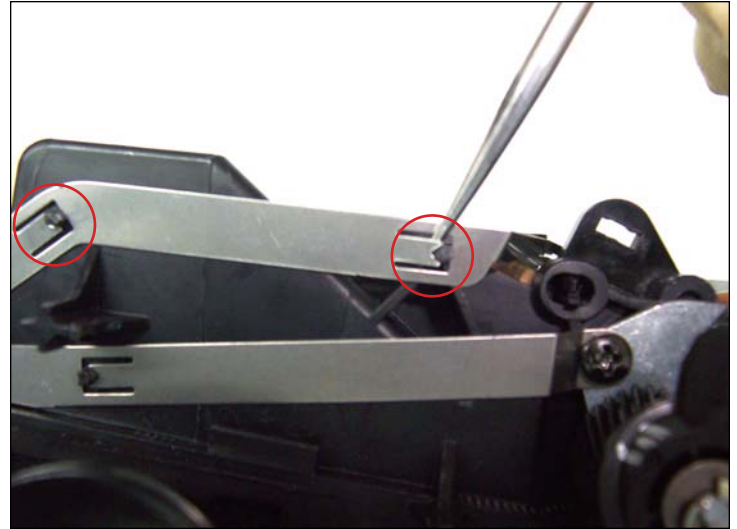
ARGENTINA
+54-11-4571-2388
+54-11-4574-3706

11124 Washington Blvd., Culver City, California U.S.A. 90232 • techsupport2@uninetimaging.com

All Trademark names are property of their respective owners. Product brand names mentioned are intended to show compatibility only. Uninet Imaging does not guarantee or warrant downloaded information.
© 2006 Uninet Imaging Inc.



5. The OPC is very sensitive to light. It is strongly recommended to cover the drum unit to block out any light when not in use.

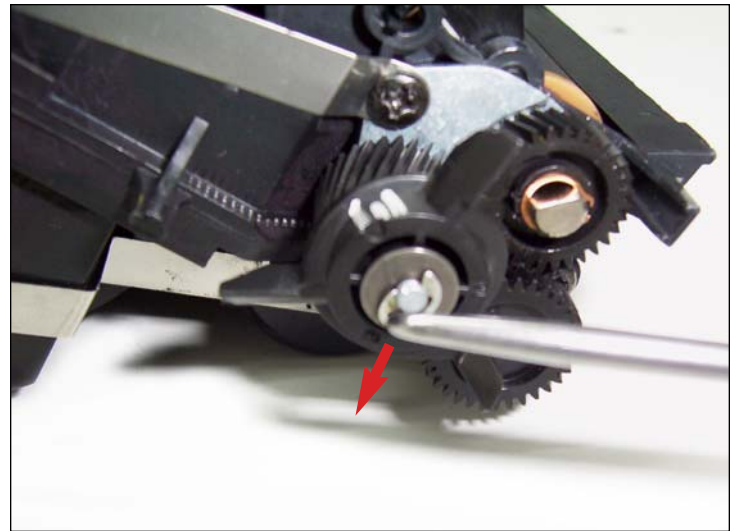


DISASSEMBLING THE TONER HOPPER

6. First, using a scribe, remove the doctor bar contact by prying it free from the locking clips shown.



7. Doctor bar contact removed.



REMOVING THE DRIVE GEAR

8. First, unlock the drive gear by removing the "C" clip (shown) that holds it in place. Use a small flathead screwdriver or hook tool for this procedure.



USA
Ph: +1 310-280-9620
Fx: +1 310-838-7294

EUROPE
+34-93-757-1335
+34-93-741-4166

JAPAN
+81-3-44-55-2789
+1 310-838-7294

BRAZIL
+55-11-4822-3033
+55-11-4822-3353

ARGENTINA
+54-11-4571-2388
+54-11-4574-3706

11124 Washington Blvd., Culver City, California U.S.A. 90232 • techsupport2@uninetimaging.com

All Trademark names are property of their respective owners. Product brand names mentioned are intended to show compatibility only. Uninet Imaging does not guarantee or warrant downloaded information.
© 2006 Uninet Imaging Inc.

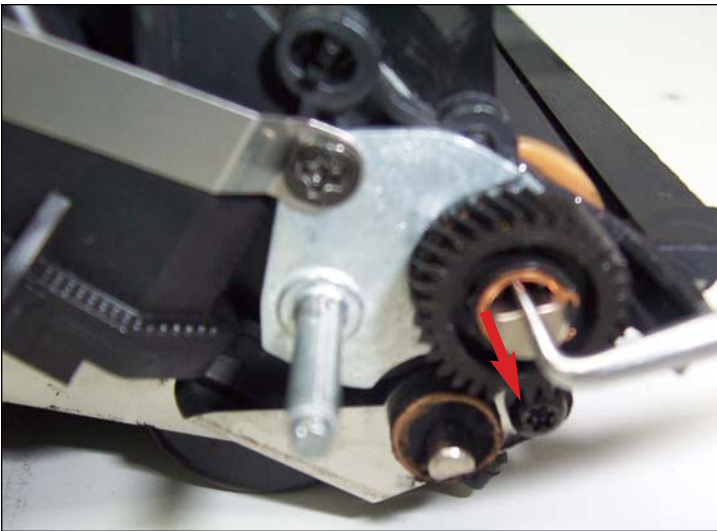


9. "C" clip, washer, and drive gear (shown) removed.



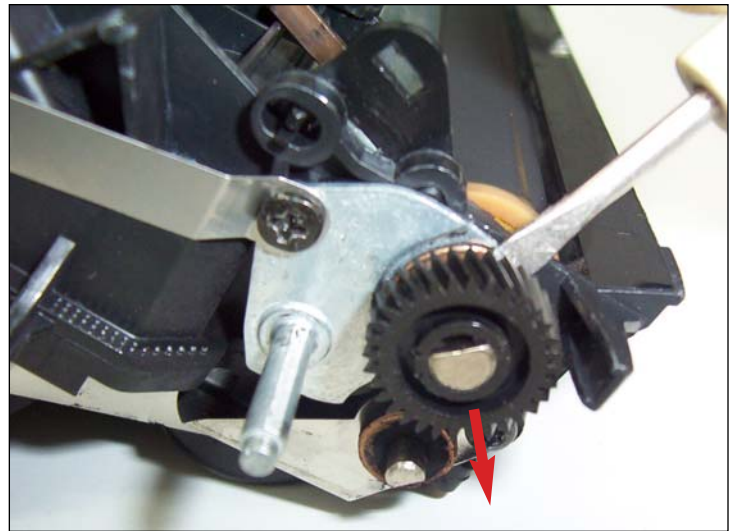
REMOVING THE SUPPLY ROLLER GEAR

10. Push the supply roller gear (shown) out using a small flat-head screwdriver and applying a small amount of force.



REMOVING THE DEVELOPER ROLLER GEAR

11. Using a hook tool, pull out the retaining ring (shown) that holds the developer roller gear in place.



12. Slide the developer roller gear out using a small flathead screwdriver.



USA
Ph: +1 310-280-9620
Fx: +1 310-838-7294

EUROPE
+34-93-757-1335
+34-93-741-4166

JAPAN
+81-3-44-55-2789
+1 310-838-7294

BRAZIL
+55-11-4822-3033
+55-11-4822-3353

ARGENTINA
+54-11-4571-2388
+54-11-4574-3706

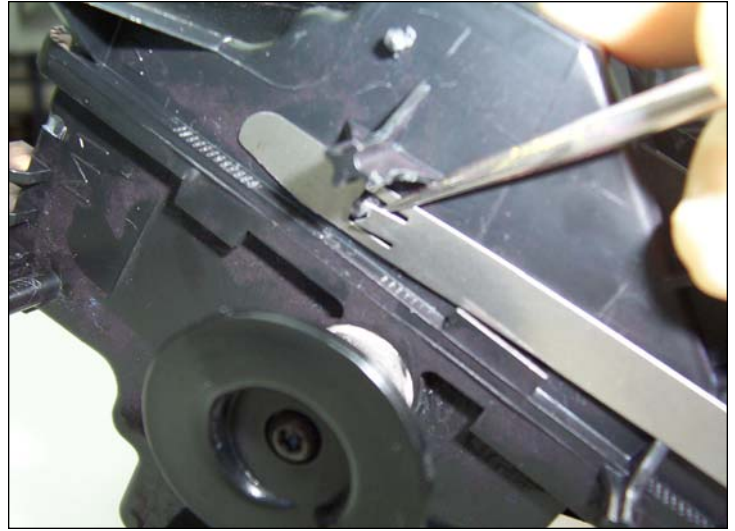
11124 Washington Blvd., Culver City, California U.S.A. 90232 • techsupport2@uninetimaging.com

All Trademark names are property of their respective owners. Product brand names mentioned are intended to show compatibility only. Uninet Imaging does not guarantee or warrant downloaded information.
© 2006 Uninet Imaging Inc.



REMOVING THE GEAR SUPPORT PLATE

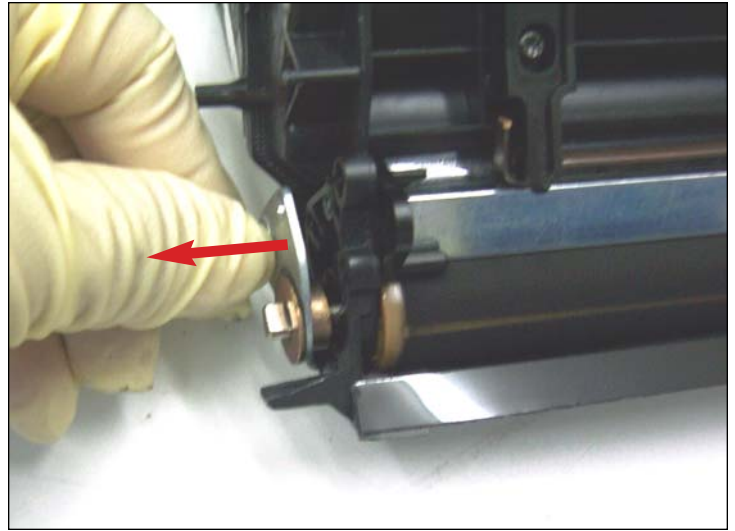
13. Remove the screw that holds the contact (shown) and the gear support plate in place.



14. Using a scribe, pry off the contact from the locking clip (shown) for complete removal.



15. Contact removed



16. Now, remove the gear support plate by sliding it out.



USA
Ph: +1 310-280-9620
Fx: +1 310-838-7294

EUROPE
+34-93-757-1335
+34-93-741-4166

JAPAN
+81-3-44-55-2789
+1 310-838-7294

BRAZIL
+55-11-4822-3033
+55-11-4822-3353

ARGENTINA
+54-11-4571-2388
+54-11-4574-3706

11124 Washington Blvd., Culver City, California U.S.A. 90232 • techsupport2@uninetimaging.com

All Trademark names are property of their respective owners. Product brand names mentioned are intended to show compatibility only. Uninet Imaging does not guarantee or warrant downloaded information.
© 2006 Uninet Imaging Inc.

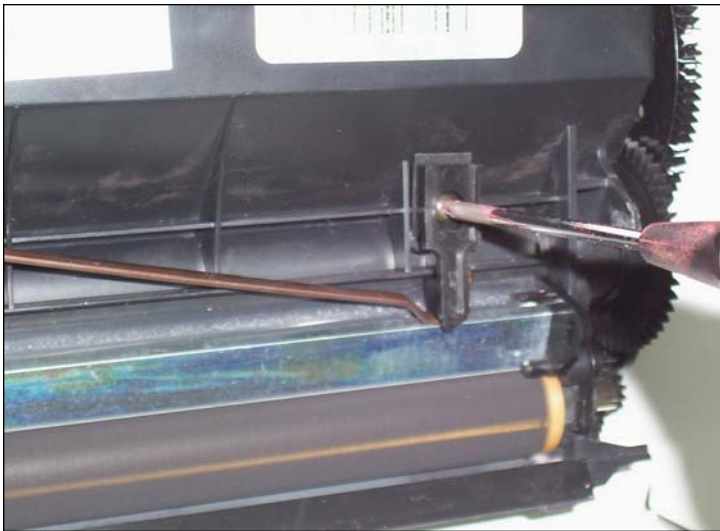


REMOVING THE LEAF SPRING

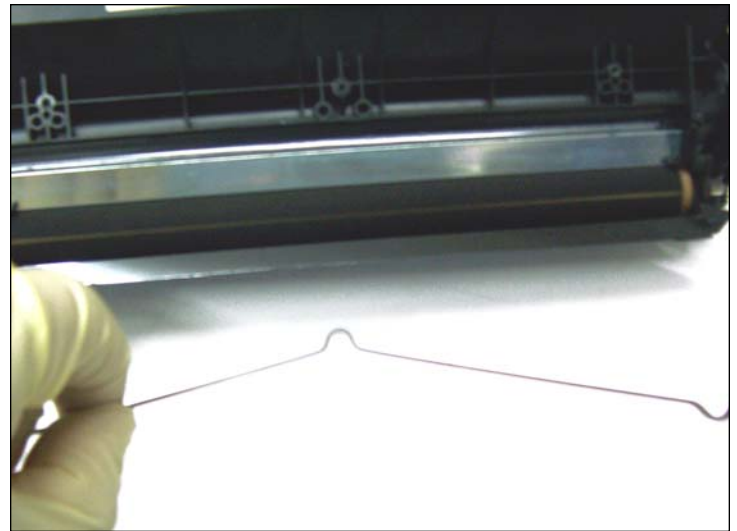
17. First, remove the screw (shown) that fastens the leaf spring pressure holder in place.



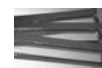
18. Hold the leaf spring down and remove the holder shown.
NOTE: With pressure released, the leaf spring cannot cause damage to the developer roller.



19. Remove the leaf spring positioning holder by removing the screw that holds it in place.



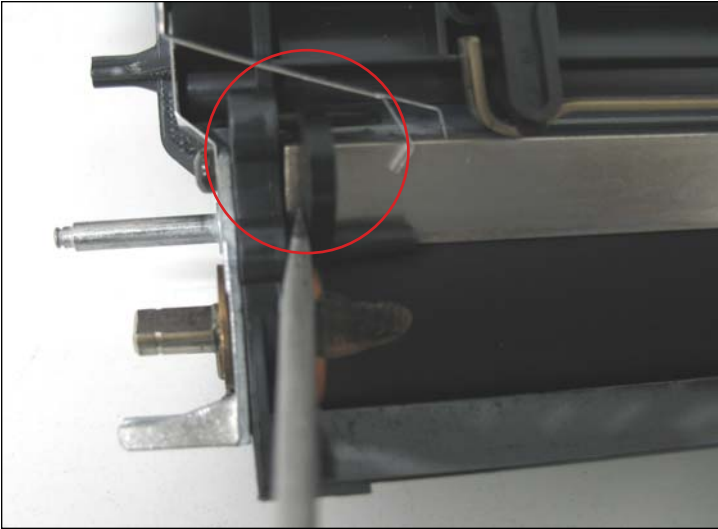
20. Leaf spring removed.



USA	EUROPE	JAPAN	BRAZIL	ARGENTINA
Ph: +1 310-280-9620	+34-93-757-1335	+81-3-44-55-2789	+55-11-4822-3033	+54-11-4571-2388
Fx: +1 310-838-7294	+34-93-741-4166	+1 310-838-7294	+55-11-4822-3353	+54-11-4574-3706

11124 Washington Blvd., Culver City, California U.S.A. 90232 • techsupport2@uninetimaging.com

All Trademark names are property of their respective owners. Product brand names mentioned are intended to show compatibility only. Uninet Imaging does not guarantee or warrant downloaded information.
© 2006 Uninet Imaging Inc.

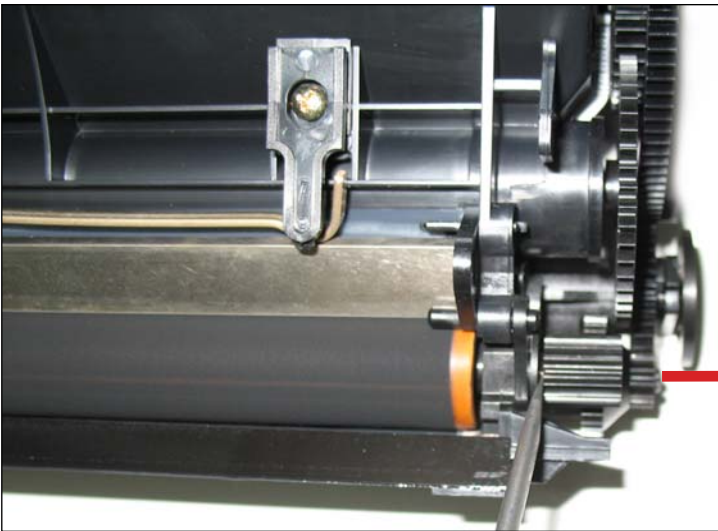


REMOVING THE DOCTOR BAR

21. First, slide out the retaining tab (shown) that holds the doctor bar in place.



22. Remove the doctor bar as shown.



REMOVING THE DEVELOPER ROLLER

23. First, using a small flat-head screwdriver, slide out the developer roller gear as shown.



24. Developer roller gear removed.



USA
Ph: +1 310-280-9620
Fx: +1 310-838-7294

EUROPE
+34-93-757-1335
+34-93-741-4166

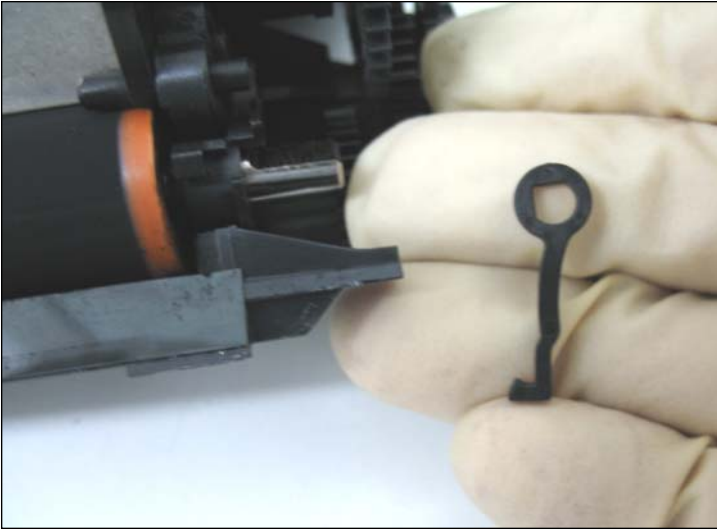
JAPAN
+81-3-44-55-2789
+1 310-838-7294

BRAZIL
+55-11-4822-3033
+55-11-4822-3353

ARGENTINA
+54-11-4571-2388
+54-11-4574-3706

11124 Washington Blvd., Culver City, California U.S.A. 90232 • techsupport2@uninetimaging.com

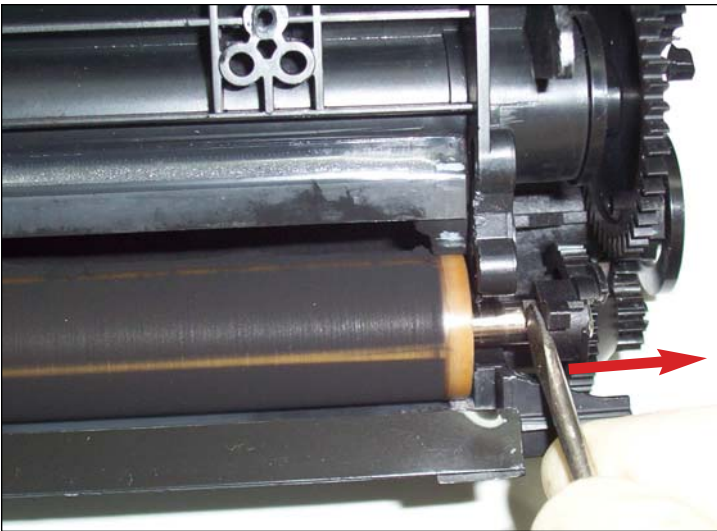
All Trademark names are property of their respective owners. Product brand names mentioned are intended to show compatibility only. Uninet Imaging does not guarantee or warrant downloaded information.
© 2006 Uninet Imaging Inc.



25. Then slide out the developer roller shaft bushing clip that is directly behind it.



26. Next, unlock the developer roller shaft bushing by rotating it upward as shown using a hook tool.



27. Using a small flat-head screwdriver, slide out the developer roller shaft bushing as shown.



28. Developer roller shaft bushing removed.



USA
Ph: +1 310-280-9620
Fx: +1 310-838-7294

EUROPE
+34-93-757-1335
+34-93-741-4166

JAPAN
+81-3-44-55-2789
+1 310-838-7294

BRAZIL
+55-11-4822-3033
+55-11-4822-3353

ARGENTINA
+54-11-4571-2388
+54-11-4574-3706

11124 Washington Blvd., Culver City, California U.S.A. 90232 • techsupport2@uninetimaging.com

All Trademark names are property of their respective owners. Product brand names mentioned are intended to show compatibility only. Uninet Imaging does not guarantee or warrant downloaded information.
© 2006 Uninet Imaging Inc.



29. Finally, remove the developer roller as shown.



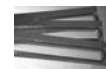
ACCESSING THE TONER FILL PLUG

30. To access the fill plug, you must first remove the toner agitator drive gear using a star tool.



31. Remove the toner fill plug as shown using a small flat-head screwdriver. Clean cartridge thoroughly using compressed air. Reassemble the hopper following the previous steps in reverse order. Once the cartridge has been reassembled, refill with the proper amount of toner.

NOTES



USA
Ph: +1 310-280-9620
Fx: +1 310-838-7294

EUROPE
+34-93-757-1335
+34-93-741-4166

JAPAN
+81-3-44-55-2789
+1 310-838-7294

BRAZIL
+55-11-4822-3033
+55-11-4822-3353

ARGENTINA
+54-11-4571-2388
+54-11-4574-3706

11124 Washington Blvd., Culver City, California U.S.A. 90232 • techsupport2@uninetimaging.com

All Trademark names are property of their respective owners. Product brand names mentioned are intended to show compatibility only. Uninet Imaging does not guarantee or warrant downloaded information.
© 2006 Uninet Imaging Inc.



REMOVING THE OPC

32. Using a small pointed tool, rotate the OPC locking device (shown) clockwise to release the OPC.



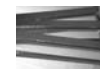
33. To remove the drum, pull away from the housing as shown.

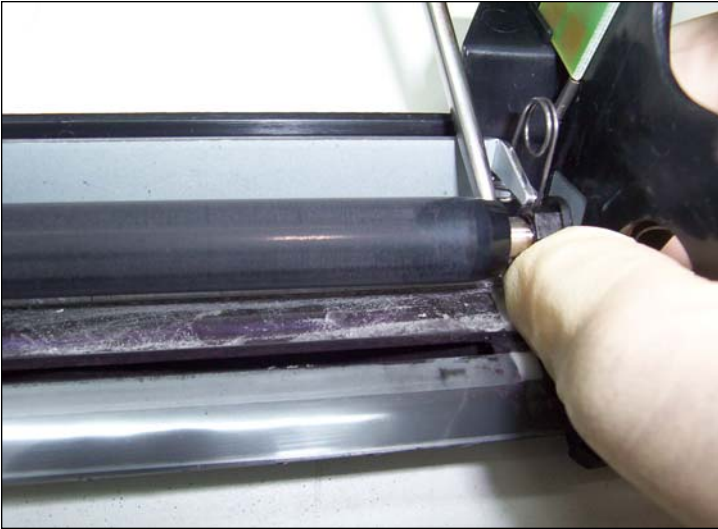


34. Remove the rest of the OPC as shown.



35. Notice the white plug (shown magnified). If removed, toner from the waste hopper would leak. Remove during cleaning.



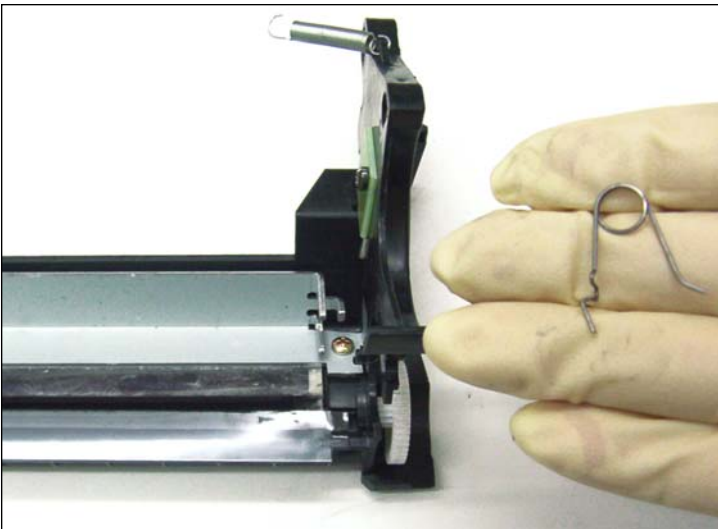


REMOVING THE PCR

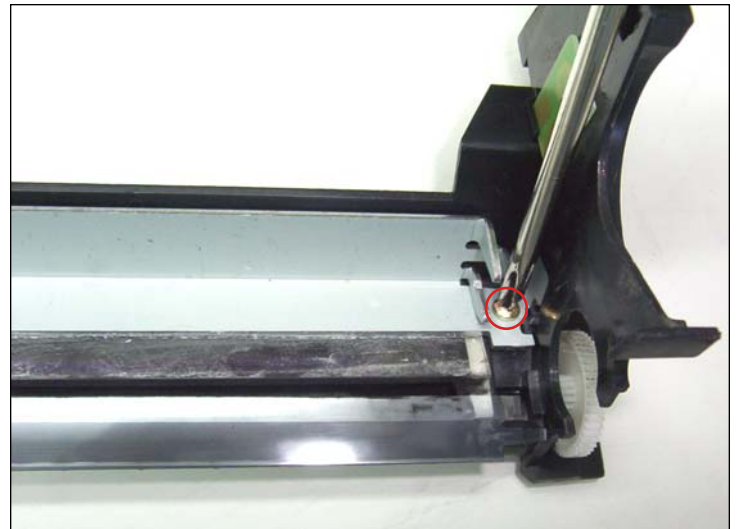
36. Pry out the PCR together with the PCR saddles.



37. Remove the PCR as shown.



38. Once the PCR has been removed, the PCR spring (shown) can then be released.



REMOVING THE WIPER BLADE

39. Remove the two screws at the ends of the wiper blade that hold it in place.



USA
Ph: +1 310-280-9620
Fx: +1 310-838-7294

EUROPE
+34-93-757-1335
+34-93-741-4166

JAPAN
+81-3-44-55-2789
+1 310-838-7294

BRAZIL
+55-11-4822-3033
+55-11-4822-3353

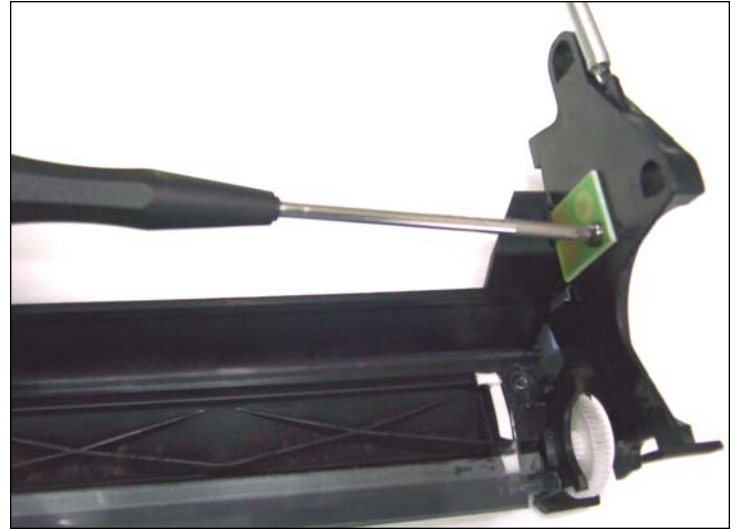
ARGENTINA
+54-11-4571-2388
+54-11-4574-3706

11124 Washington Blvd., Culver City, California U.S.A. 90232 • techsupport2@uninetimaging.com

All Trademark names are property of their respective owners. Product brand names mentioned are intended to show compatibility only. Uninet Imaging does not guarantee or warrant downloaded information.
© 2006 Uninet Imaging Inc.

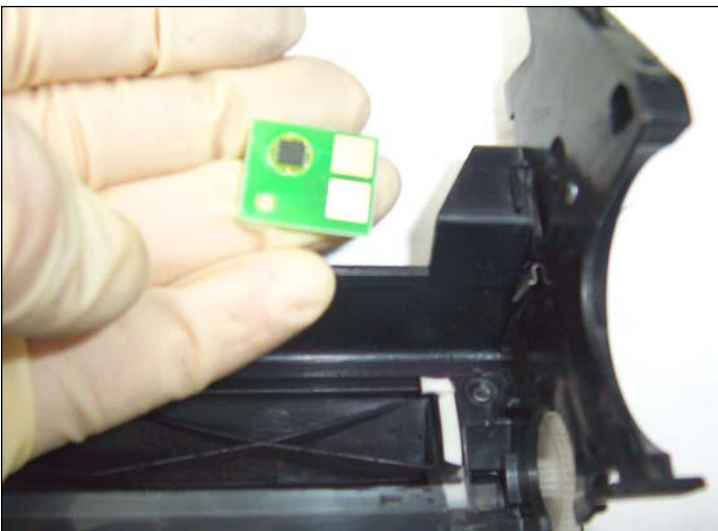


40. Lift the wiper blade and remove as shown.



REMOVING THE OEM CHIP

41. Using a star tool, remove the screw that holds the OEM chip in place.



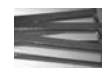
42. Chip removed.

Clean drum unit and parts thoroughly

Install replacement chip and reassemble drum unit following the previous steps in reverse.

Test the cartridge.

NOTES



USA
Ph: +1 310-280-9620
Fx: +1 310-838-7294

EUROPE
+34-93-757-1335
+34-93-741-4166

JAPAN
+81-3-44-55-2789
+1 310-838-7294

BRAZIL
+55-11-4822-3033
+55-11-4822-3353

ARGENTINA
+54-11-4571-2388
+54-11-4574-3706

11124 Washington Blvd., Culver City, California U.S.A. 90232 • techsupport2@uninetimaging.com

All Trademark names are property of their respective owners. Product brand names mentioned are intended to show compatibility only. Uninet Imaging does not guarantee or warrant downloaded information.
© 2006 Uninet Imaging Inc.